

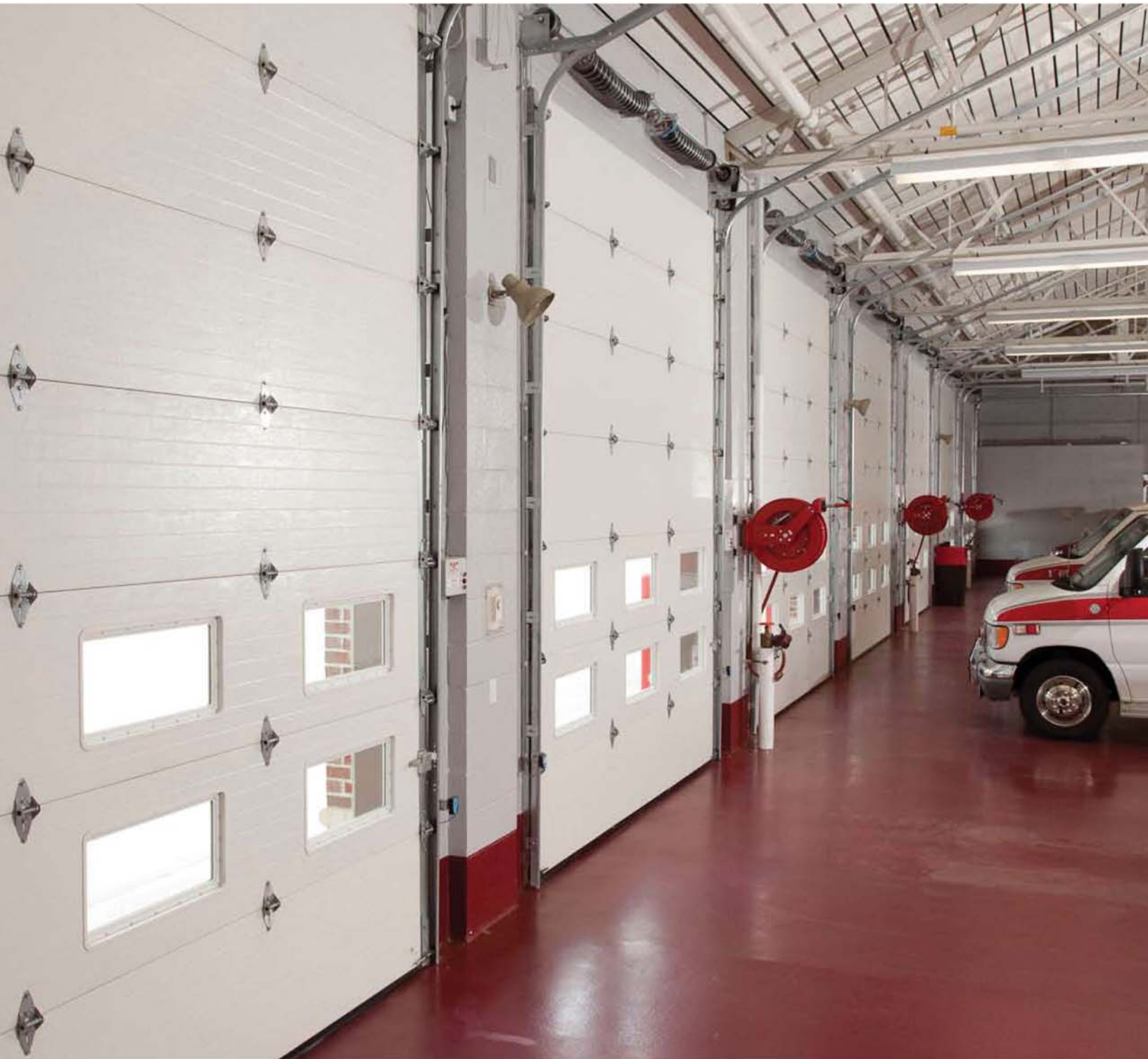


2000

2000 SERIES

2010 | 2012 | 2014 | 2016 | 2032 | 2033 | 2032-20 | 2033-20 | 2050 | 2051 | 2060 | 2070 | 2080 | 2090 **Commercial Insulated Steel Doors**





Haas Door 2000 SERIES

2010 | 2012 | 2014 | 2016 | 2032 | 2033 | 2032-20 | 2033-20 | 2050 | 2051 | 2060 | 2070 | 2080 | 2090

The Strength To Keep Out Noise And Weather...

Haas Door 2000 SERIES doors stand up to the elements – insulating, dampening noise, and enhancing your building's aesthetics at the same time. Choosing high R value sectional doors will help increase energy savings. Polyurethane insulation provides the highest R values available in sectional doors.

Our doors are reinforced with roll-formed galvanized steel struts and double-end hinges, as required to meet windload specifications and to comply with ANSI/DASMA 102-2004. The protective coating system is found on both the interior and exterior steel.

Unique Paint System

Our three-tier, corrosion-resistant protective paint system is designed to resist even the most hostile weather conditions. Haas Door's paint thickness is one of the highest in the industry. Most of the 2000 SERIES models are available in 10 colors.

Hard Working Hardware

The track is 2" or 3" galvanized steel, depending on door size, with bracket mount for wood jambs or continuous reverse mounting for steel jambs. For angle-mount track, door widths are 2" wider than the opening. Track rollers are 2" or 3" case-hardened inner and outer steel races with 10-ball pre-lubricated bearings. Hinges, brackets, and reinforced struts are hot-dipped galvanized steel. Fasteners are plated for maximum corrosion resistance.

Counterbalancing springs are torsion type, computer calibrated to match door load. This provides a 10,000-cycle life at the minimum; optional spring wires can achieve 25,000, 50,000 and 100,000 cycle requirements. Springs are wound from oil-tempered wire and mounted on a continuous cross header tube or solid shaft, as determined by torque load.

You can contact one of our professional dealers for information on additional options, including: exterior cylinder locks, chain hoist operation, safety bottom brackets, and special lift clearance tracks (high lift, vertical lift, low headroom, and those that follow the roof line). Optional Aluminum Full View sections provide maximum light and visibility with available insulated glazing. Full view sections are available in 7 colors. Custom pass through doors are also available on the 2000 SERIES.

Energy Efficiency

2000 SERIES doors are 2" thick. The calculated R-Value for this product is 17.66. Rigid vinyl extrusions with positive thermal breaks are used to eliminate metal-to-metal contact, which limits the transfer of temperature. Tongue-and-groove construction and section joint seals at meeting rails provide optimum water and wind resistance.

A full-length, one-piece vinyl bottom astragal retainer and flexible vinyl U-shaped weather-strip prevent infiltration of air, rain, snow and debris. The seal reduces impact shocks when the door is closed against concrete flooring.

Exceptional Strength

2000 SERIES doors are built strong. The high-density CFC-free polyurethane foam expands and adheres to the interior and exterior steel panels to provide a rigid unitized structure.



Window Options



TL Lite 25" x 12"

Available on 2010, 2012, 2014, 2016, 2032-20, 2033-20, 2050, 2051



Small TL Lite 24" x 6"

Available on 2010, 2012, 2014, 2016, 2032-20, 2033-20, 2050, 2051



Raised Panel Lite

Available on 2080 and 2090



Ranch Lite

Available on 2070



Aluminum Full-View

Available on all models in all colors except for Kynar colors

Panel Options



2010 and 2014



2012 and 2016



2032



2060 Carriage House



2070 Ranch Panel



2080 Raised Panel



2090 Sculptured Raised Panel

Quick Reference Product Guide

CHT-2000 Series

Door Thickness: 2" (50.8mm)
With Full Thermal Break
R-Value: 17.66*

Model	Max. Door Size		End Stile Type	Section Skins	
	Width	Height		Inside	Outside
2010	18'-2"	16'-0"	EXTRUDED END CAP	26 GA V-GROOVE WOODGRAIN STEEL	26 GA FLUSH WOODGRAIN STEEL
2012	18'-2"	16'-0"	EXTRUDED END CAP	26 GA V-GROOVE WOODGRAIN STEEL	26 GA V-GROOVE WOODGRAIN STEEL
2014	38'-2"	32'-0"	STEEL	26 GA V-GROOVE WOODGRAIN STEEL	26 GA FLUSH WOODGRAIN STEEL
2016	38'-2"	32'-0"	STEEL	26 GA V-GROOVE WOODGRAIN STEEL	26 GA V-GROOVE WOODGRAIN STEEL
2032	38'-2"	32'-0"	STEEL	26 GA V-GROOVE WOODGRAIN STEEL	20 GA SMOOTH STEEL
2033	38'-2"	32'-0"	STEEL	26 GA V-GROOVE WOODGRAIN STEEL	20 GA V-GROOVE SMOOTH STEEL
2032-20	38'-2"	32'-0"	STEEL	20 GA V-GROOVE SMOOTH STEEL	20 GA SMOOTH STEEL
2033-20	38'-2"	32'-0"	STEEL	20 GA V-GROOVE SMOOTH STEEL	20 GA V-GROOVE SMOOTH STEEL
2050	38'-2"	32'-0"	STEEL	24 GA V-GROOVE STUCCO ALUMINUM	24 GA V-GROOVE STUCCO ALUMINUM
2051	38'-2"	32'-0"	STEEL	24 GA V-GROOVE STUCCO ALUMINUM	24 GA FLUSH STUCCO ALUMINUM
2060	24'-2"	20'-0"	EXTRUDED END CAP	26 GA V-GROOVE WOODGRAIN STEEL	26 GA CARRIAGE HOUSE PANEL WOODGRAIN STEEL
2070	24'-2"	20'-0"	EXTRUDED END CAP	26 GA V-GROOVE WOODGRAIN STEEL	26 GA RANCH PANEL WOODGRAIN STEEL
2080	24'-2"	20'-0"	EXTRUDED END CAP	26 GA V-GROOVE WOODGRAIN STEEL	26 GA RAISED PANEL WOODGRAIN STEEL
2090	24'-2"	20'-0"	EXTRUDED END CAP	26 GA V-GROOVE WOODGRAIN STEEL	26 GA SCULPTURED PANEL WOODGRAIN STEEL

*all doors over 18' wide include steel end styles.

*calculated R-Value

Available Colors:



Due to the printing process, colors may vary. For accurate color samples, contact a Haas Door dealer for a color selector. 2032 and 2033 models available in Polar White and Brown only. 2050 and 2051 available in Polar White only.