



ANODIZED ALUMINUM PANEL DOORS



Special Features

- Vinyl moulding glazing seals.
- Available in a wide variety of glazing materials.
- Steel THRU-BOLT construction.



Lynx doors are sold from coast to coast by a network of specially trained installing distributors. The product is thoroughly backed by a staff of highly skilled technicians that bring every aspect of the latest techniques and modern manufacturing to give the customer the finest in quality and dependability in Lynx doors, hardware and operators.

Standard Aluminum Doors

MODEL AL-101 TUBULAR EXTRUDED

This anodized aluminum sectional overhead type door, Model AL-101 has the distinction of being virtually maintenance free, clean in appearance, high in strength and skillfully engineered. When more than one (1) section must be glazed with wire glass then specify Model AL-200 (See below)

Max. area	260 sq. ft.
Max. width	16'0" (See "hardware")
Max. height	16'0" (See "hardware")
Thickness	1 3/4"
Meeting Rails	2 1/2" high per pr.
Muntins	1-5/16"
Top, bottom rails and end stiles	3" for doors to 14'2" wide
Top, bottom rails and end stile	4-1/16" for doors 14'3" to 16'0" wide

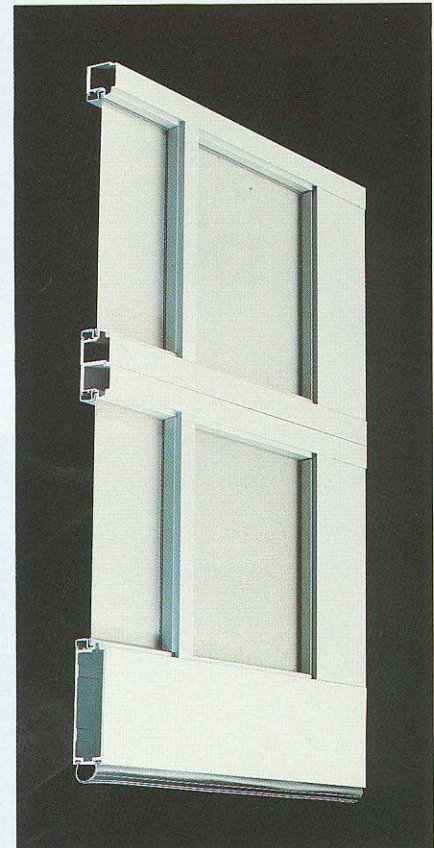


Heavy Duty Aluminum Doors

MODEL AL-200 FOR EXTRA WIDE DOORS AND MULTI-OPERATIONAL CONDITIONS

The most widely accepted door in the construction industry is the Lynx Model AL-200 Aluminum Door, offering the ultimate in beauty, construction and durability. Tubular construction throughout...Heavy gauge stiles and rails...thru-bolt assembly and double wall thickness for hardware locations make it the finest aluminum door available anywhere. Anodized aluminum finish but with other colours available. Consult distributor for details.

Max. area	672 sq. ft.
Max. width	28'0"
Max. height	24'0" (doors over these sizes, consult factory)
Thickness	1 3/4"
Meeting Rails	3 3/8" high per pr.
Muntins	1-5/16" or 2"
Top, bottom rails and end stiles	4 1/16" for doors to 16'0" wide
Top, bottom rails and end stile	5 3/4" for doors to 28'0" wide



**DETAILED DESCRIPTION
MODELS AL-101 – AL-200**

FULL TUBULAR EXTRUDED ALUMINUM ALLOY (ALCAN 50S-T6)

Horizontal and vertical members are joined together by concealed thru-bolts and self-locking nuts. This provides high strength and rigidity in both open and closed positions and gives positive security to the section. All stiles and rails have double wall thickness where hardware is mounted. Built-in truss reinforcing for doors 12'3" to 16'0" wide in Model AL-101. For Model AL-200 doors 14'3" to 16'0" wide same truss is used; from 20'2" to 21'11" Std. cap struts are added to built-in trusses and from 22'0" and over H.D. "T" shaped cap struts are added to built-in trusses. This provides strength and rigidity in closed position for wind resistance, and deflection in open position.

PANELS. Aluminum panels will be 16 ga. (unless specified otherwise). Panels hermetically sealed in moulded vinyl gaskets in a 3/8" deep groove in the stiles and rails and retained on the inside face by removeable aluminum moulding. Various colours available in anodized and durable acrylic finish. Consult factory for colour fastness and finish.

GLASS. 24 oz. glass standard (1/8" acrylic safety glass is recommended when you require extra protection)...**IMPORTANT NOTE:** Do not over balance door sections by suing 1/4" plate wire or cast wire glass, burglar systems, etc. More expensive spring mechanism is required (at extra cost) for doors installed with wire glass.

INSULATIONS. Rigid insulation such as Styrolite or equal can be supplied on any section. (Must specify).

WEATHERSTRIPPING. The bottom rail is supplied with a flexible rolled astragal to provide a seal between the door and the floor.

HARDWARE. For doors up to 144 sq. ft. max. width 12'2" max. height 12'2" specify 2" hardware. For doors over these limits and/or opening and closing more than 50 times per day, specify 3" hardware.

TRACKS. 2" ind. or 3" ind. grade, galvanized steel. Tracks are bracket mounted for wood casings and steel jamb conditions. Horizontal tracks are angle reinforced according to door weight and size. For limited or special headroom locations consult factory.

SPRINGS. Torsion springs are supplied in all cases. Lifting by preformed galvanized aircraft cable rotating on aluminum die cast drums.

LOCK. Single point dead-bolt type with adjustable striking plate on vertical track.

OPERATION. Manual push-up for doors up to 12'6" high. For doors over 12'7" high or 144 sq. ft. chain hoist equipment recommended. For electric operation, see Lynx brochures.

Panel Schedule		Section Schedule	
Door Width	No. of Panels	Door Height	No. of Section
UP TO		UP TO	
8'11"	2	8'6"	4
11'11"	3	10'6"	5
14'11"	4	12'6"	6
17'11"	5	14'6"	7
20'11"	6	16'6"	8
23'11"	7 etc.	18'6"	9 etc.

**ARCHITECT'S SPECIFICATIONS
Models AL-101, AL-200**

Tubular Aluminum sectional doors to be mfg. by Lynx Ind. Inc. Model AL-200 of a size and design as shown on plans. Doors to be anodized finished with full tubular construction on all stiles, rails and muntins (open extrusion type doors not accepted). Rails to be joined by thru-bolts (not welded). Built-in truss as per manufacturer's specifications. Aluminum panels to be 16 ga. Glass openings as shown use 24 oz. D.D. glass. Factory glazed. Hardware to be 2" or 3" industrial grade, galvanized steel tracks to be mounted on wood casings (steel jambs). Casings or jambs to be supplied by others according to manufacturer's instructions including necessary extension for hardware and spring mechanism. Counterbalanced by torsion springs rotating on sealed ball bearing mounting plates. Lock - single point dead-bolt type with adjustable striking plate on vertical track. Manual, chain hoist and/or electric operation. Doors to be installed by the local Lynx Installing-Distributor. All material and workmanship to be guaranteed for a period of one year.

LIMITED WARRANTY

Lynx Ind. Inc. warrants that every door and its hardware and fittings will be free of defects in workmanship and material. Should any defect in workmanship or material appear within **ONE YEAR**, Lynx shall, upon notification, correct such non-conformity at their option, by repairing or replacing any defective part or parts. This warranty does not include normal wear, damage beyond the manufacturer's control or replacement labor. **NO WARRANTIES EXPRESSED OR IMPLIED (INCLUDING, BUT NOT LIMITED TO, A WARRANTY OF MERCHANTABILITY OR FITNESS FOR PARTICULAR PURPOSE) SHALL EXTEND BEYOND THE APPLICABLE TIME PERIOD STATED IN BOLD FACT TYPE ABOVE.**

Claims for the defective parts must be made to the Lynx dealer from whom the purchase was made. Notification of defects in workmanship and material must be given to the dealer within the governing warranty period.

THE FOREGOING WARRANTY IS EXCLUSIVE AND IN LIEU OF ALL OTHER WARRANTIES. IN NO EVENT SHALL SELLER BE LIABLE FOR SPECIAL OR CONSEQUENTIAL DAMAGES.

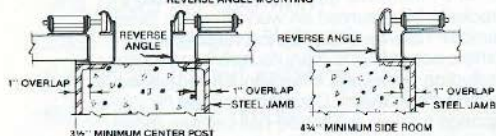


Sectional Overhead Door Standard Industrial Hardware

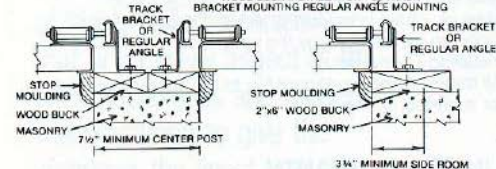
Sideroom & Center Post Requirements

STANDARD TRACK—2"			
WOOD JAMBS		STEEL JAMBS	
SIDE ROOM	CENTER COLUMN	SIDE ROOM	CENTER COLUMN
3 1/4"	7 1/2"	4 3/4"	9 1/2"
STANDARD TRACK—3"			
WOOD JAMBS		STEEL JAMBS	
SIDE ROOM	CENTER COLUMN	SIDE ROOM	CENTER COLUMN
4 1/2"	9"	5 1/2"	10"
LOW HEADROOM—2" TRACK ONLY			
WOOD JAMBS		STEEL JAMBS	
SIDE ROOM	CENTER COLUMN	SIDE ROOM	CENTER COLUMN
7"	14"	8"	16"

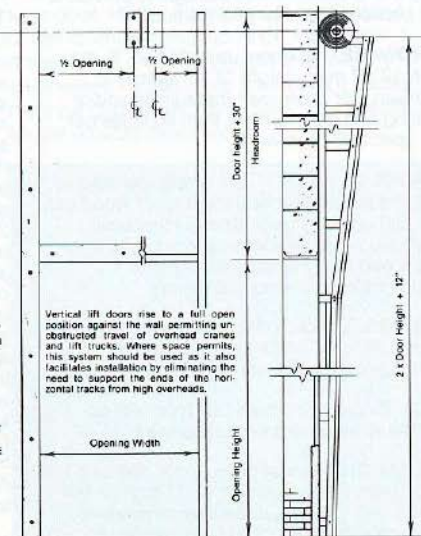
STEEL JAMB INSTALLATION—2" TRACK REVERSE ANGLE MOUNTING



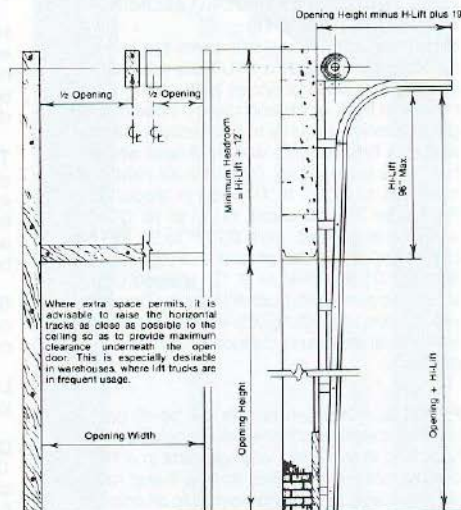
WOOD BUCK INSTALLATION—2" TRACK BRACKET MOUNTING REGULAR ANGLE MOUNTING



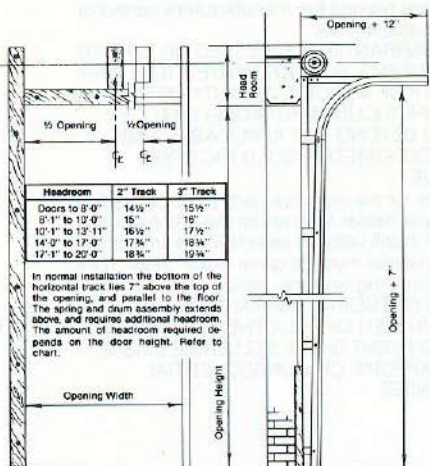
VERTICAL LIFT (TORSION SPRINGS)



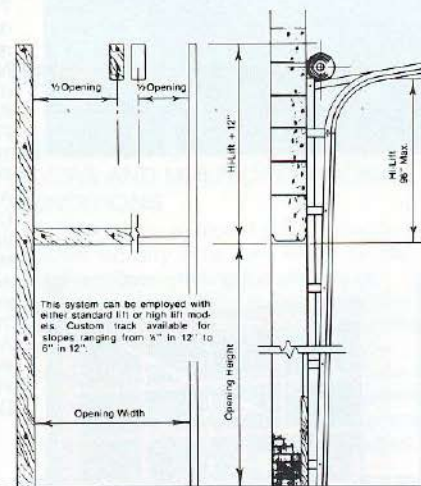
HIGH LIFT (TORSION SPRINGS)



NORMAL HEADROOM (TORSION SPRINGS)



FOLLOW THE ROOF SLOPE



LOW HEADROOM (TORSION SPRINGS)

